

City of Duncan
November, 2006



Safer Futures

- 1996 - 2006
- Community development and research program
- Local, regional and provincial projects
 - Safety audits
 - Planning, management and design
 - Policy and guidelines development
 - Research / community engagement
 - Education, training



Crime, victimization and fear

- erodes sense of community
- constricts civic and economic activity
- puts strains on hospitals and other services
- requires funds to be spent on increased security and vandalism repairs
- and equals lost money for other things
- The annual costs of responding to crime in Canada now exceed \$10 billion per year.



Addressing the Root Issues

- Crime and victimization are the visible results of problems.
- The challenge is to address the *root issues*, and increase or support the factors that offset the causes of violence.
- This means working to reduce risks for offending AND address the vulnerability of individuals and neighbourhoods.



Complex Issues

- Community safety issues are complex and inter-related
- Require comprehensive solutions and collaborative efforts



Prevention of Crime

Historically two broad categories of prevention strategies:

- **situational crime prevention:** strategies that attempt to reduce the opportunities for crime and victimization
- **crime prevention through social development (cpsd):** - strategies that attempt to focus on the root causes of crime and victimization



Situational Crime Prevention

- security, neighbourhood watch etc.
- tend to be property focused and/or protection/deterrence oriented.
- aimed at the offender: reduce the opportunity, increase the risk, reduce the reward.



CPSD Strategies

- focus on addressing “*risk factors*” : e.g. inadequate housing, poverty, parenting, low educational achievement, lack of training and employment, etc.
- encourage programs and policies that build “*protective factors*” - employment training, adequate housing, counselling and supports, etc.



Cost Comparisons

- One year of incarceration costs as much as four years of university
- A study by the Rand Corporation on tax \$ per year per person (US) required to reduce crime by 10%:
 - \$228 incarceration
 - \$118 probation
 - \$48 parent training
 - \$32 school incentives



Community Safety

- The defining feature of a safe community is the ability of all of its citizens - regardless of gender, race, age, sexuality, language, income or ability - to participate fully and freely in all of its environments.
- This requires that citizens both feel, and are, safe, and that they have meaningful opportunities to participate in local decision-making processes.



Vision for a Safer Community

- Ability to use and participate in all aspects of community as key
- Financial basics
- Food and shelter
- Resources and Supports
- Health, education access
- Environment (built and natural)
- Community connectivity and civic participation



The Safer Communities Approach

- based on an understanding of both the *physical* and *social* obstacles to safety
- immediate community-based prevention measures AND broad-based long term preventative strategies
- BOTH planning and community development improvements
- ongoing consideration of community safety and social development in decision-making processes.



Safer Communities Components

- Community and social development
- Planning, design and management
- Safety and security



1. Community and social development

- increase access to opportunities that promote healthy lifestyles.
- build individual and neighbourhood capacity including training, employment and recreational opportunities, etc.



2. Community Planning

- Planning, design and management strategies are an essential part of a comprehensive community health and safety strategy to guide long term development that will incorporate needs for safety and improve accessibility of neighbourhoods and services.



3. Physical safety and security

- Strategies to reduce the vulnerability of individuals, their homes and neighbourhoods to crime and violence through situational and site-specific measures
- Should strive to go beyond pure deterrence and security.



Safer Communities Planning

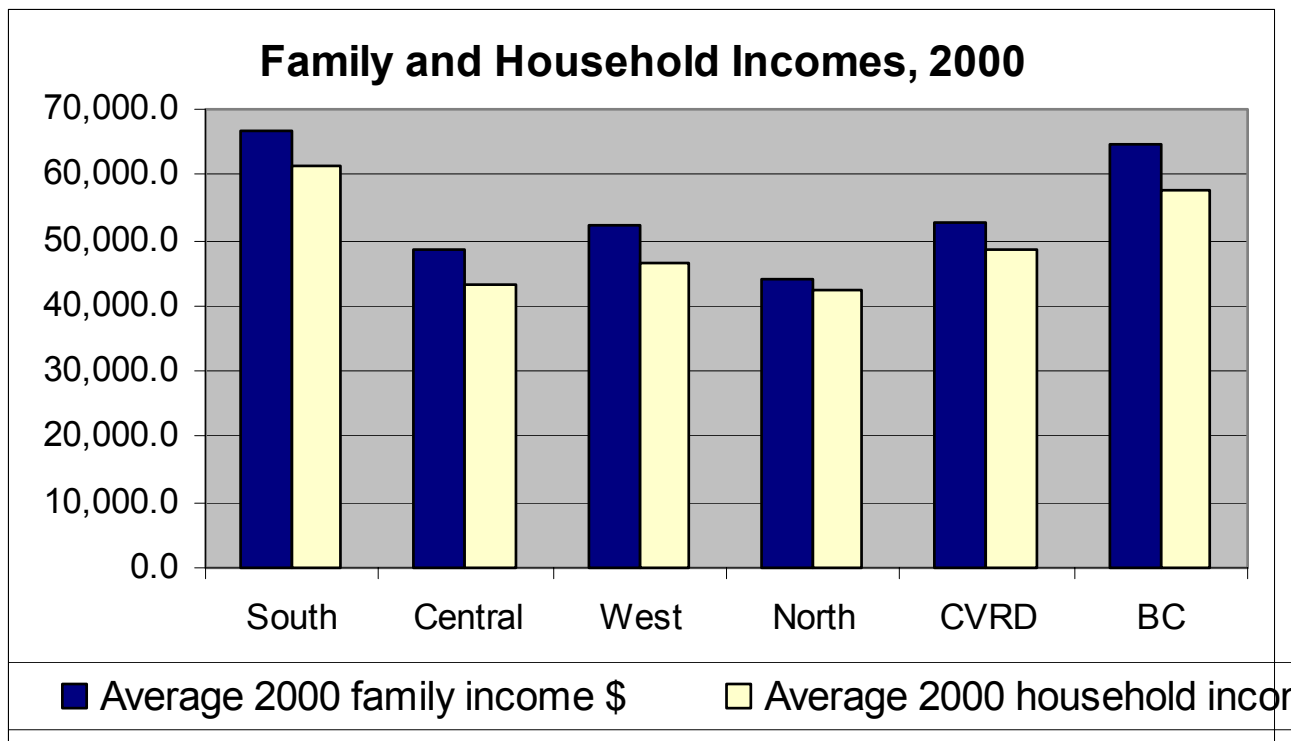
- multi-dimensional in approach and analysis
- focus on those most at risk
- Seeks to involve the whole community in discussion of issues
- Builds a comprehensive strategy
- Works toward broad community change



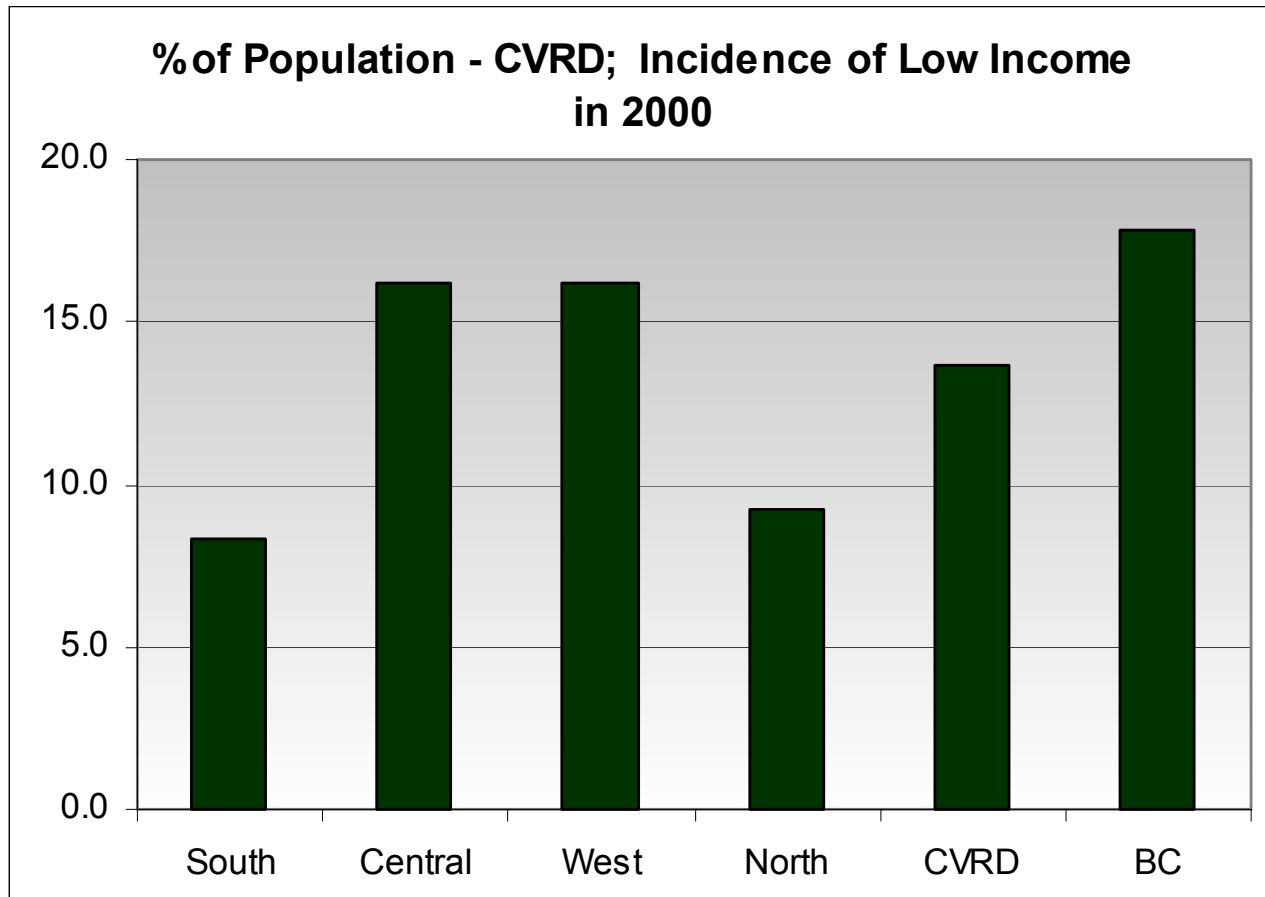
Vision for a Safer Community

- Ability to use and participate in all aspects of community as key
- Financial basics
- Food and shelter
- Resources and Supports
- Health, education access
- Environment (built and natural)
- Community connectivity and civic participation

Incomes

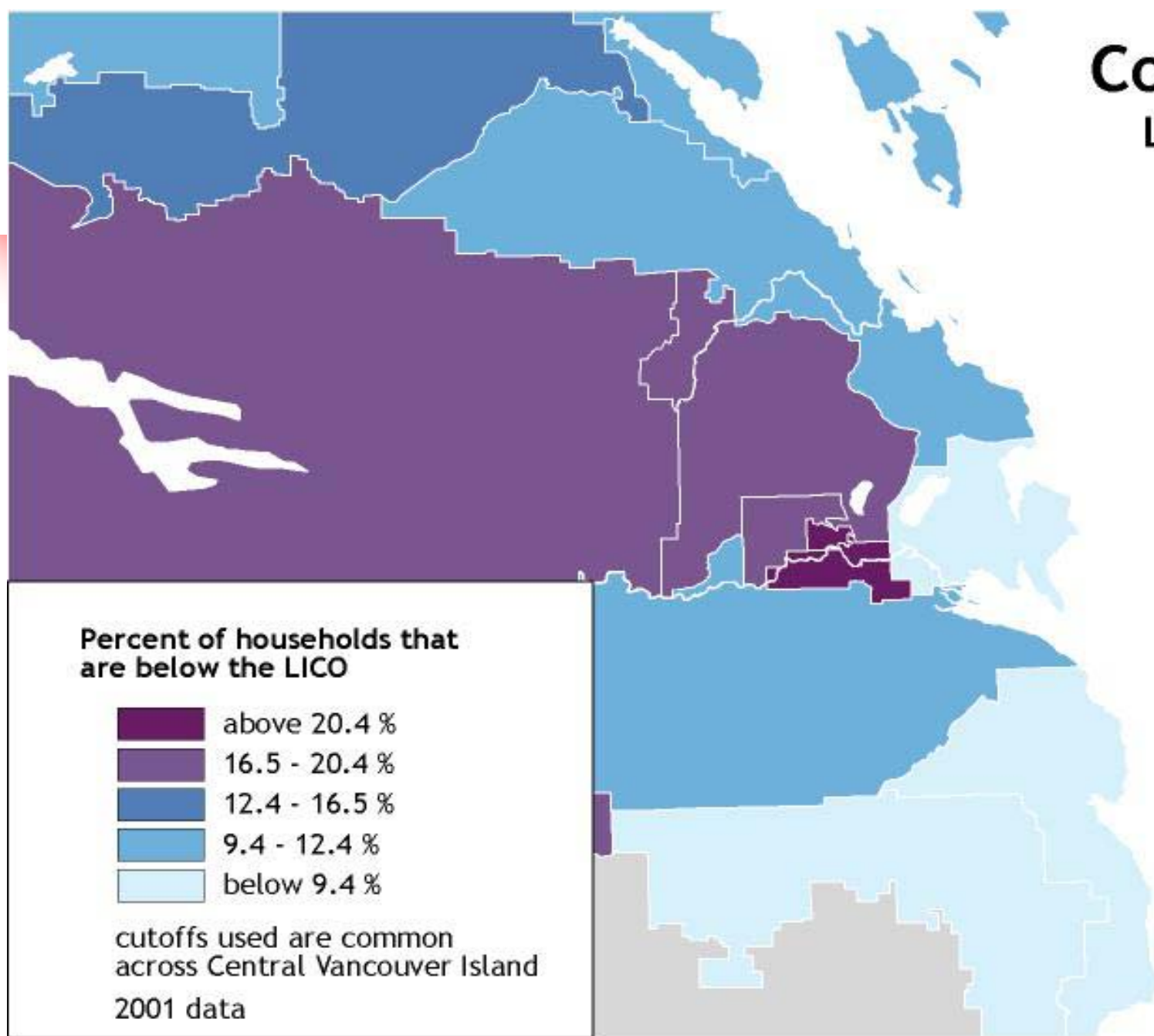


Incidence of low income



Cowichan

Low Income





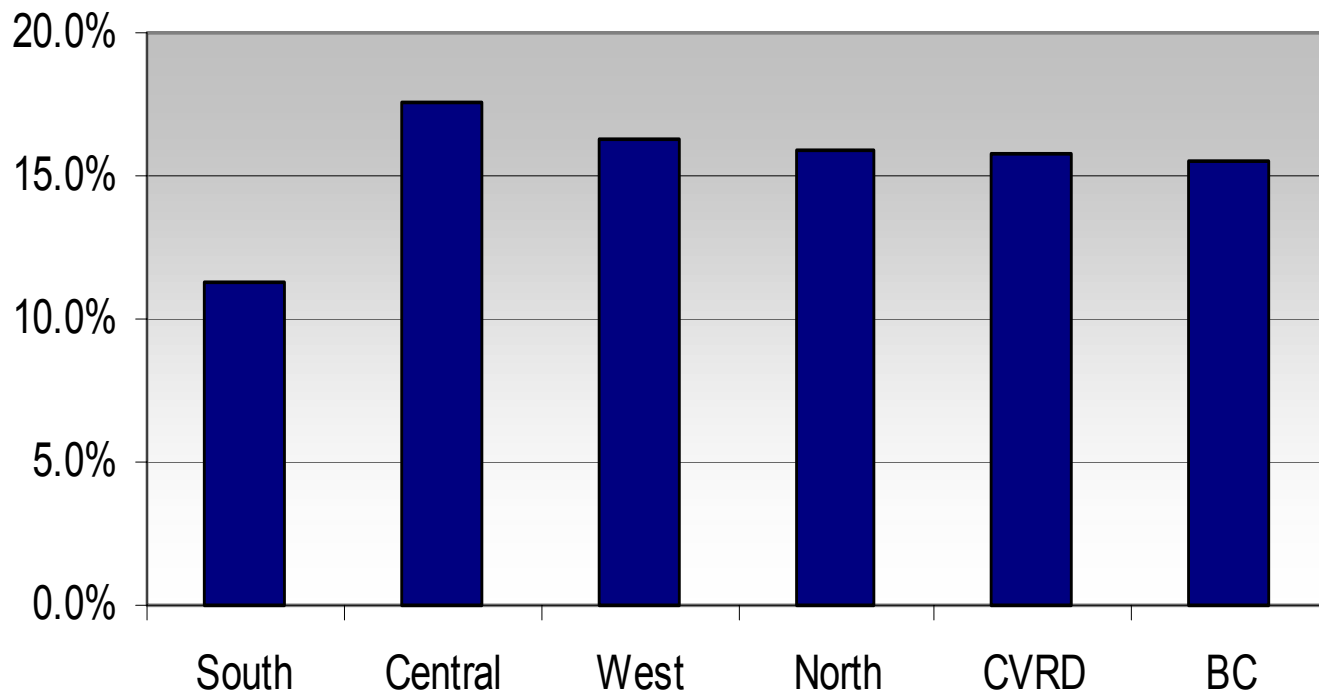
Employment rates

	CENTRAL					
	Area D	Area E	Duncan	North Cowichan	Reserve	Central
Employment rate	55.6	63.8	43.4	55.6	30.2	54.1
Unemployment rate	7.8	9.2	14.2	9.4	33.7	10.3
Males 15-24 years -	155	250	275	1620	140	2440
Employment rate	38.7	54	38.2	50	17.9	46.5
Unemployment rate	20	17.6	36.4	21.7	37.5	23.2
Females 15-24 years	110	265	240	1635	130	2380
Employment rate	50	67.9	33.3	51.1	19.2	49.4
Unemployment rate	15.4	18.6	27.3	17.7	80.0	19.6

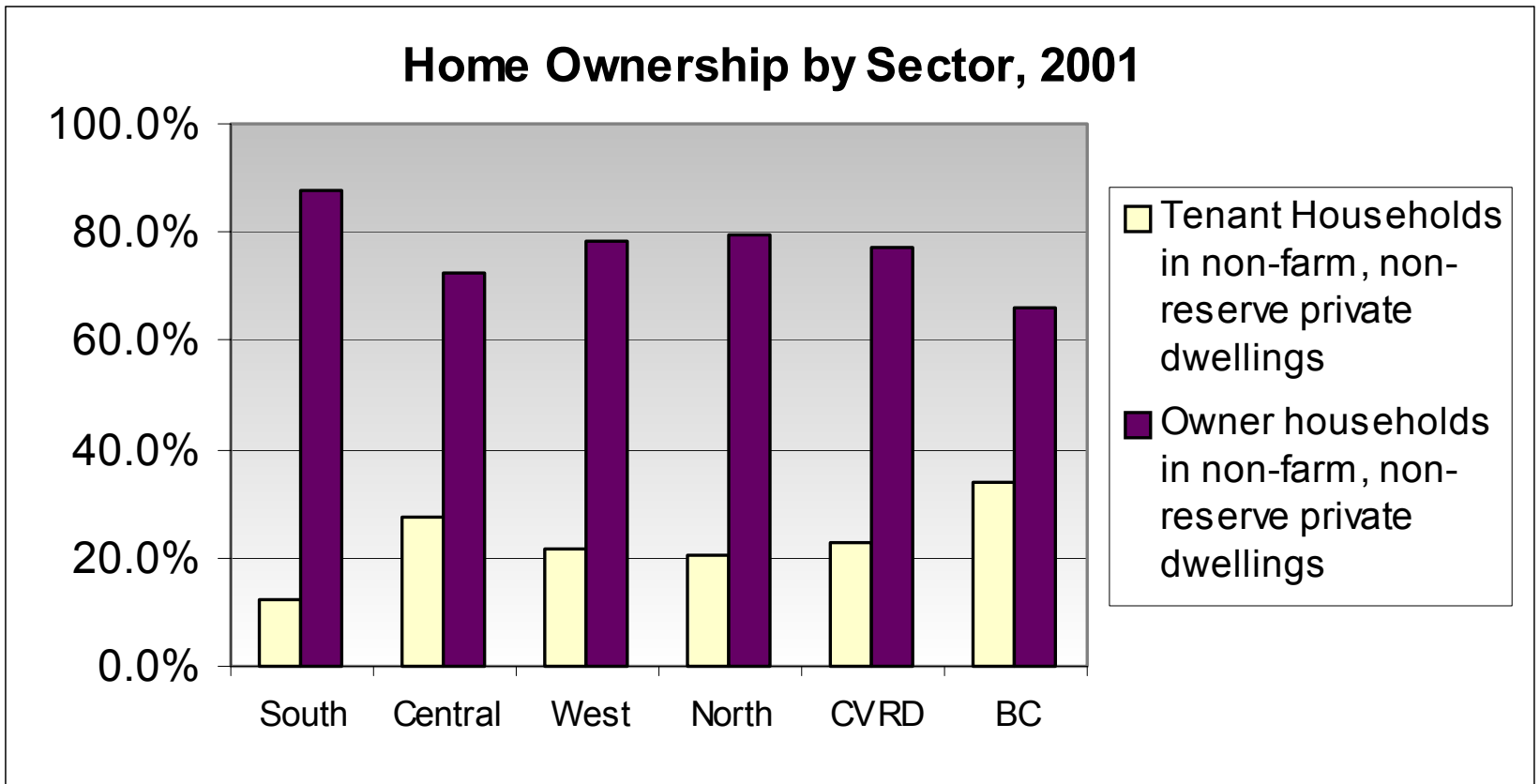


Lone parents

% of Lone-parent Households by Sector, 2001

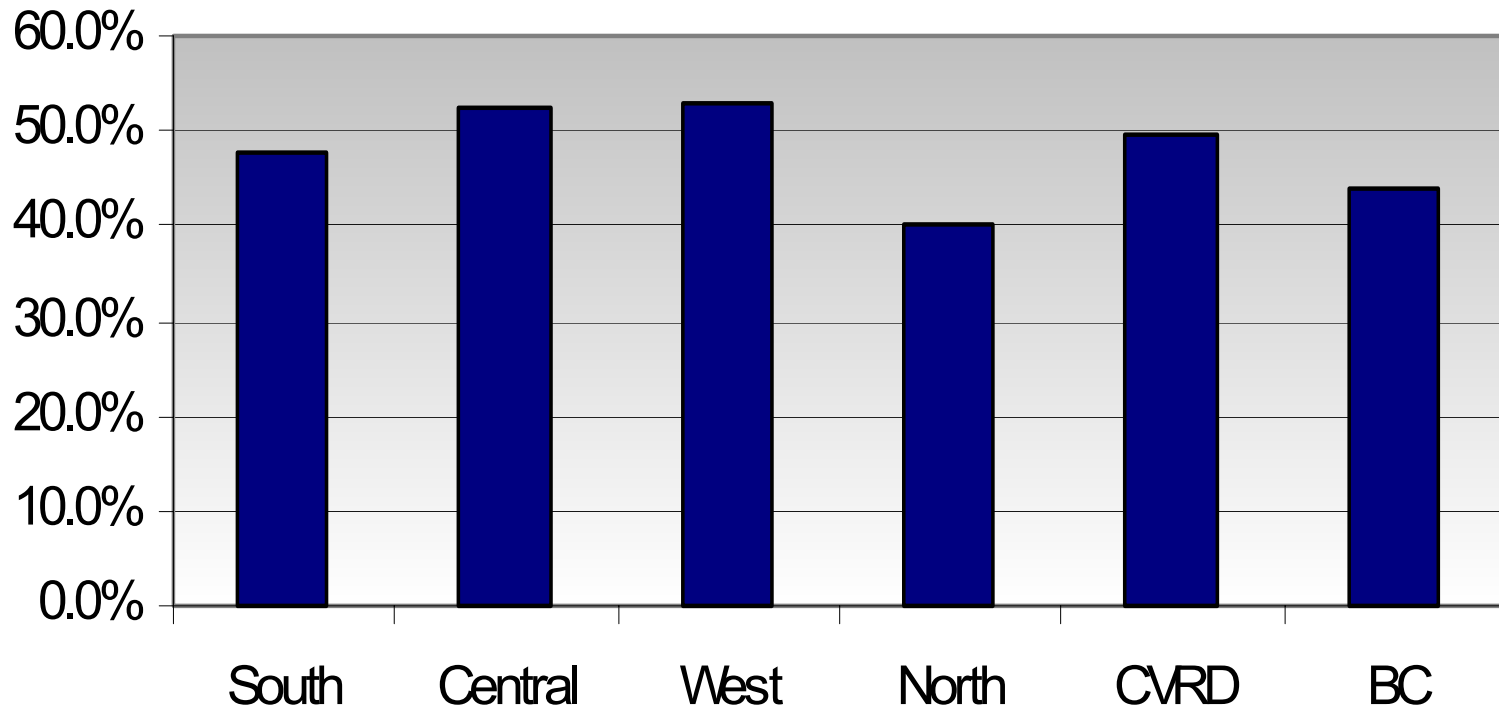


Home ownership



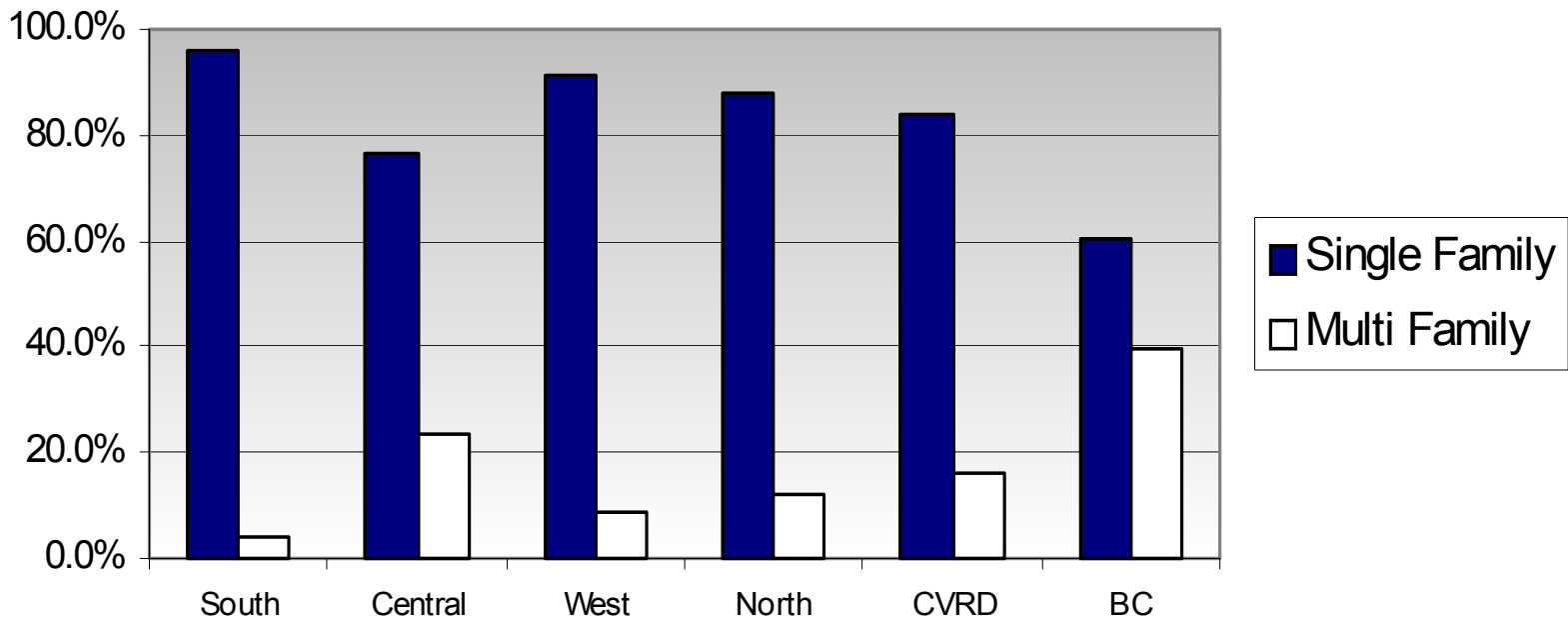
Housing affordability

Tenant households spending 30% or more of household income on gross rent, 2001

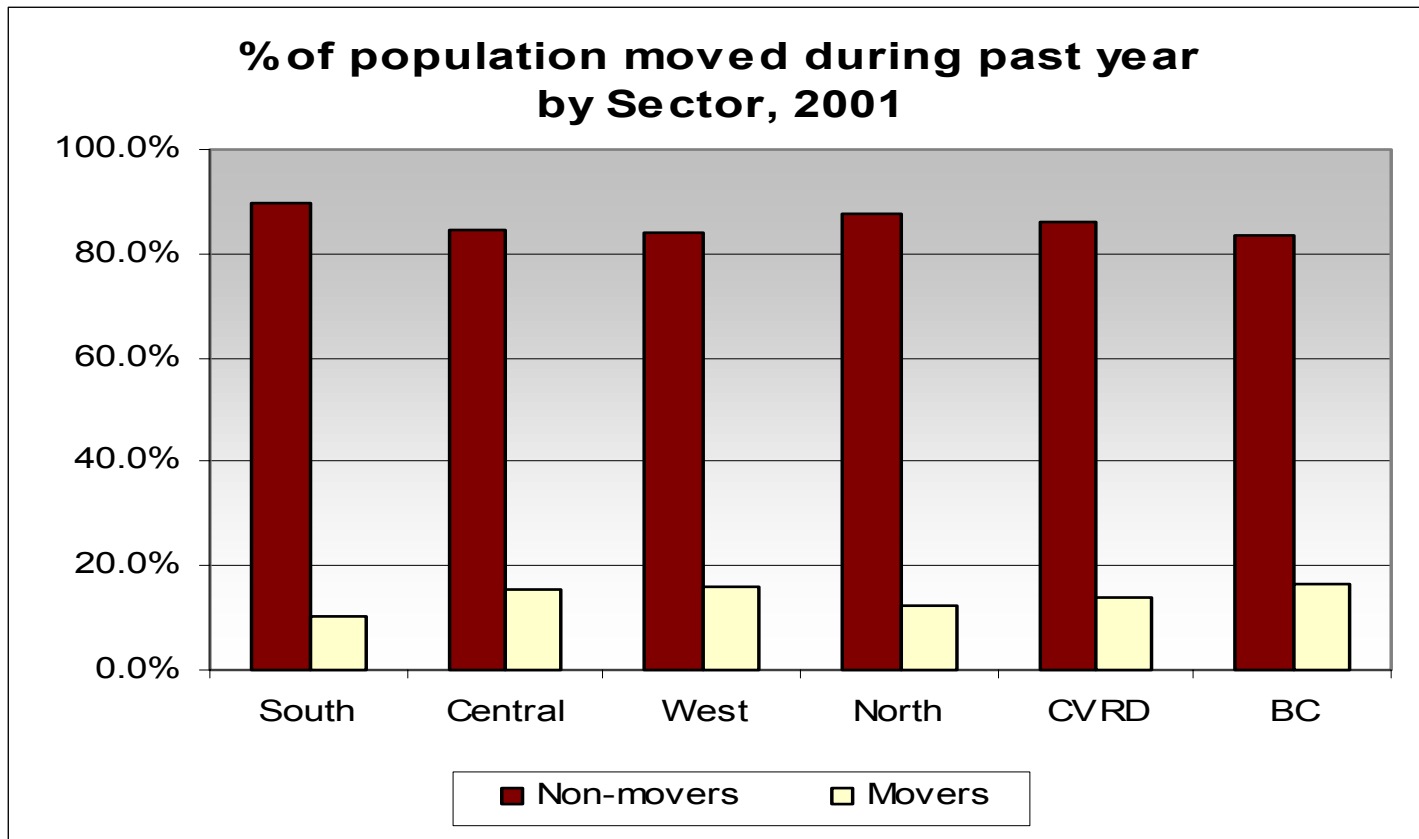


Housing types

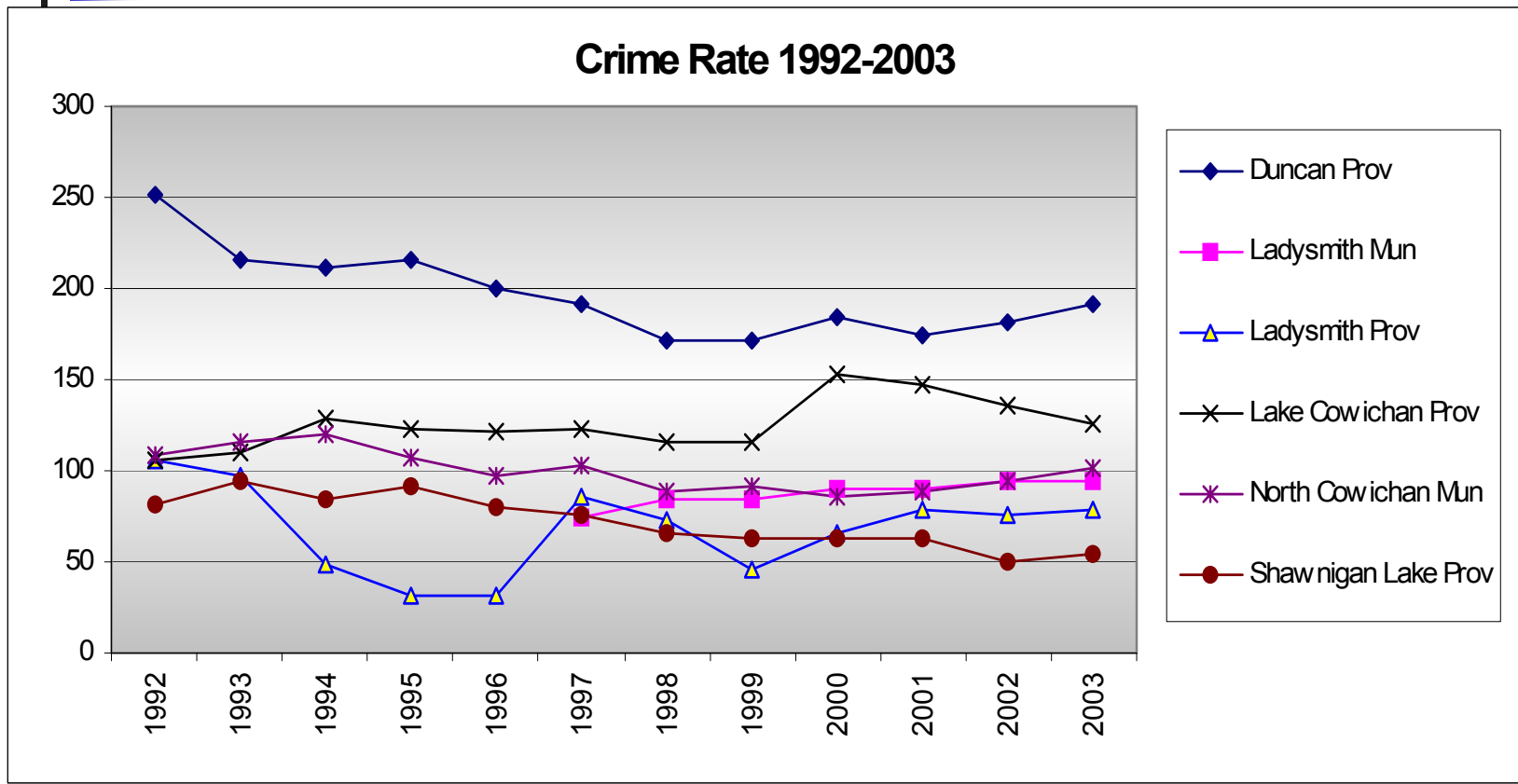
Housing Type by Sector, 2001



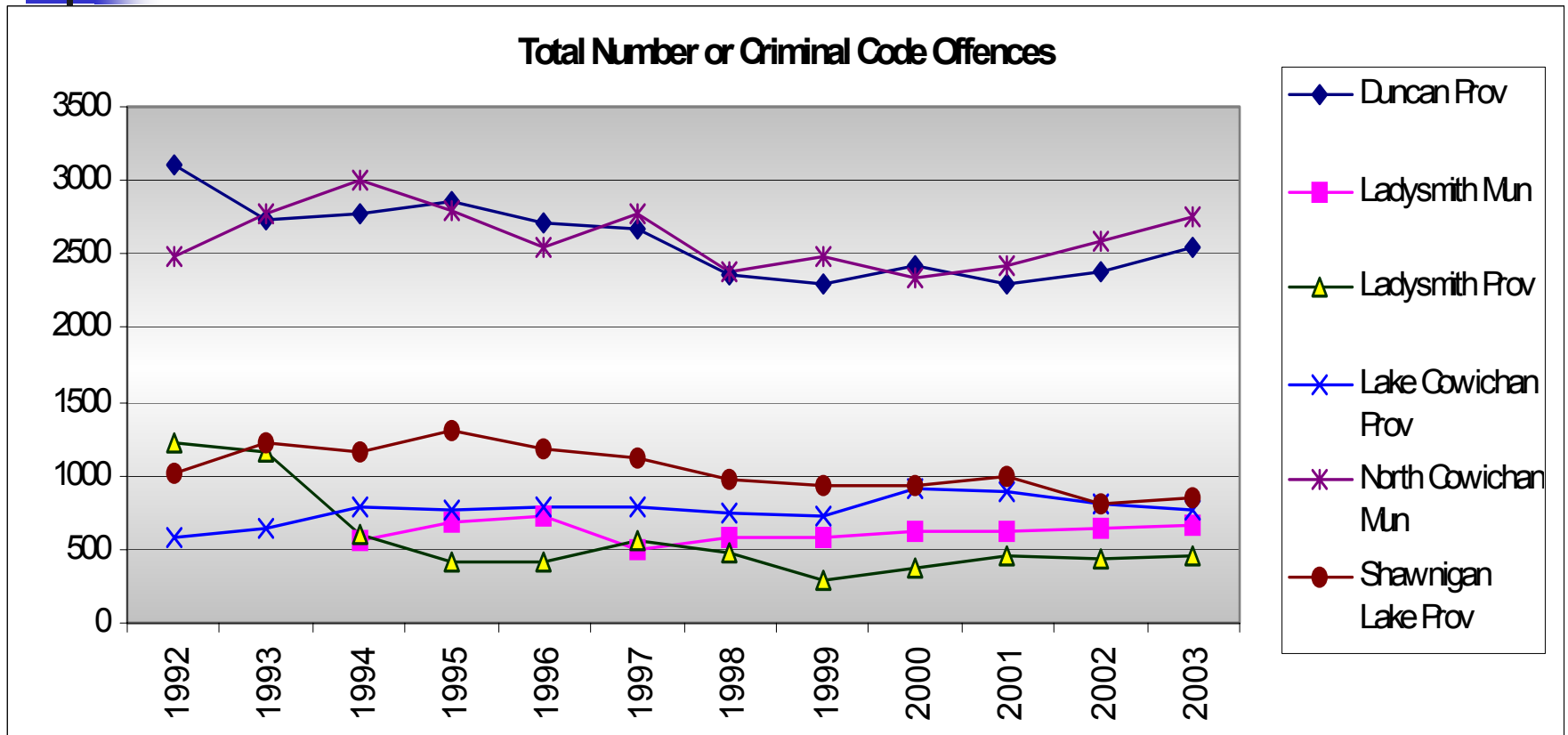
Mobility



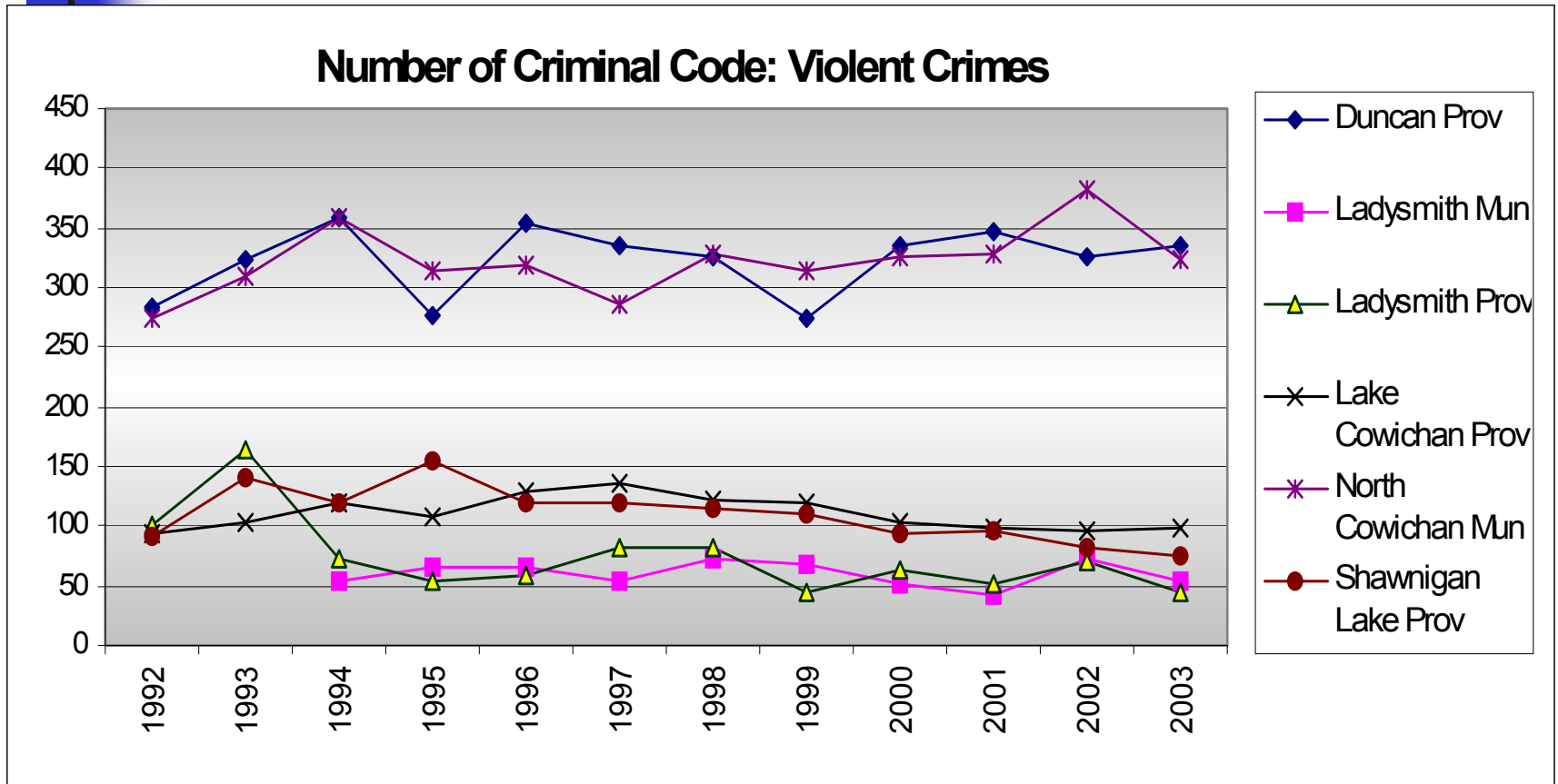
Reported Crime Rates



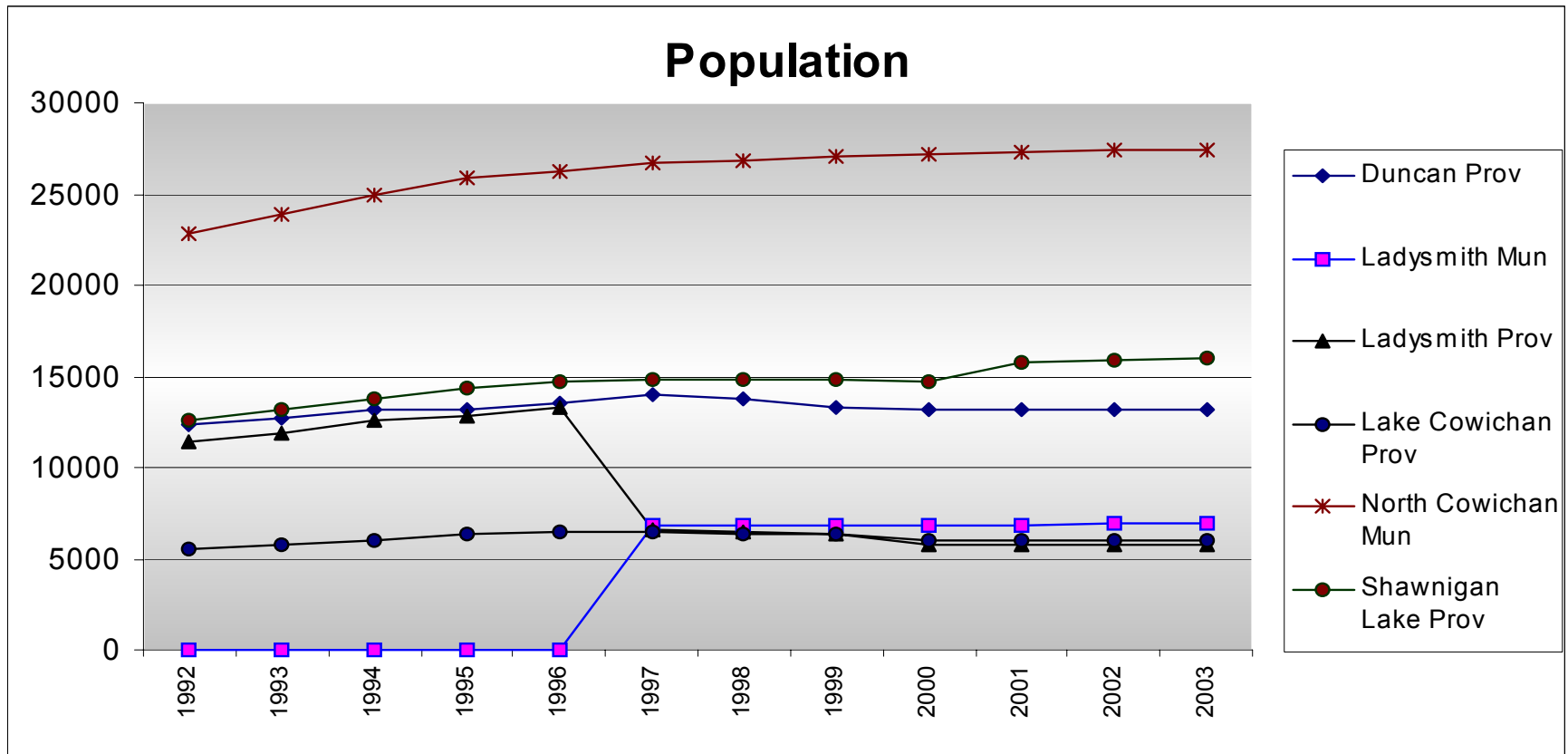
Number of Offenses



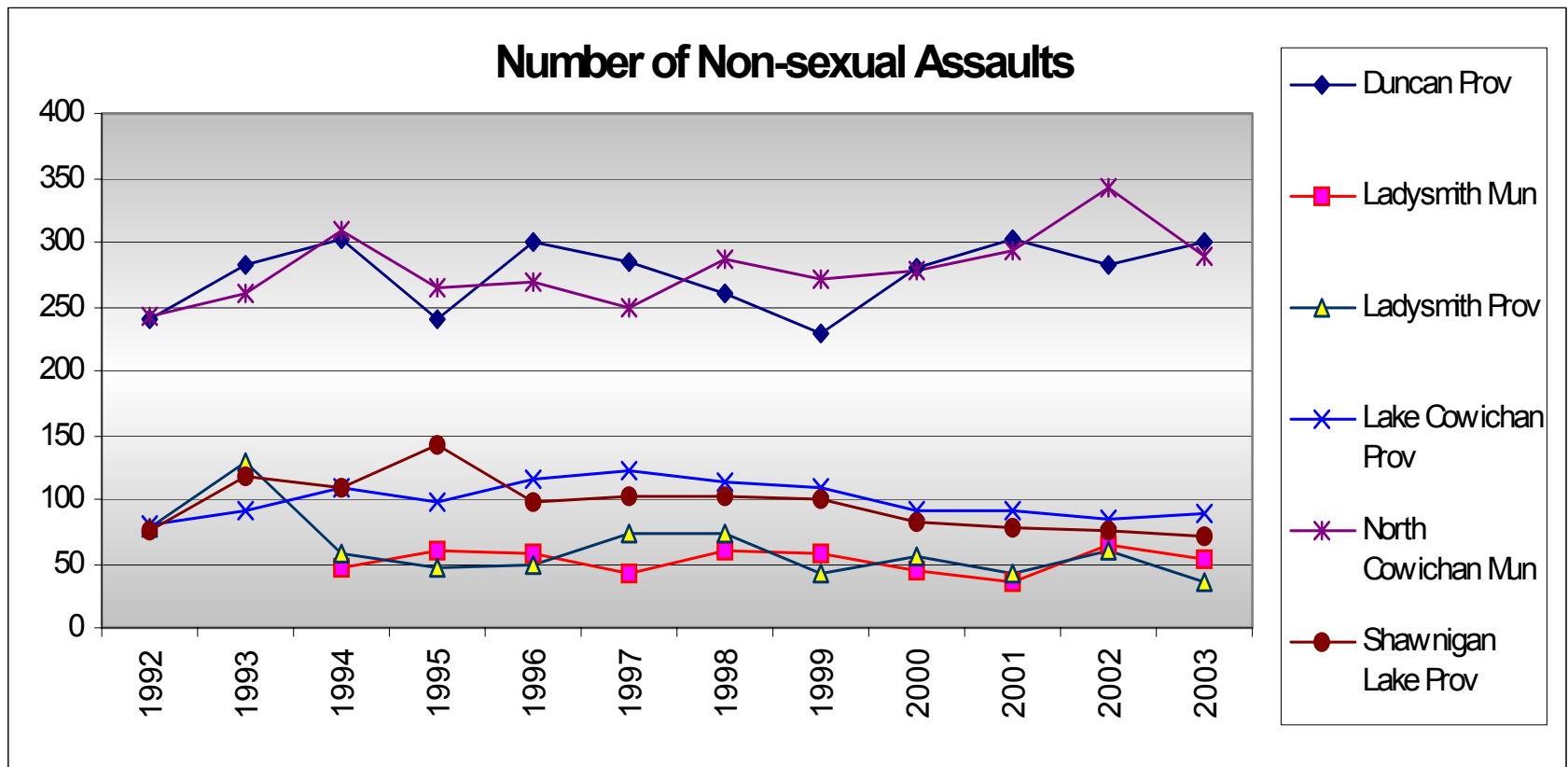
Reported Violent Crimes



Population Reporting Areas



Reported Assaults



Spousal Assaults

